

2020

Product Guide



1-800-247-8709 • www.uselectit.com



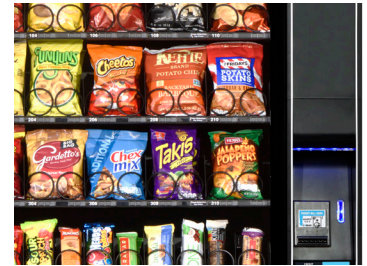


Evoke 6 Snack Merchandiser						
Selections	Up to 71 items (6 Tray); 83 Items (7 Tray)					
Electrical Requirements	Domestic: 115 VAC/60Hz, 1.2 AMPS International: 230 VAC/50Hz, 0.6 AMPS					
Dimensions	Height	72" (183 cm)	Width	46" (116.8 cm)	Depth	35.2" (89.4 cm)
Ship Weight	*626 lbs. (283.9 kg) *Varies with tray configuration and options.					
Standard Features	FLEX Controller with 3.5" LCD Color Display, LED Lighting, iVend® Sensor System, Door Switch, Delivery Assist, Braille Keypad, Leg Covers, PayRange Mobile Payment System & ADA Compliant					
Options	7th Full Size Tray, 10.1" Touch Screen Interface, Motor Pairing, Audio Interface, Custom Coil and Tray Configurations, Custom Colors, Custom Graphics, Kick Panel & Changeable LED Backlit POS					



Product Capacity and Flexibility

633 Items (6 Tray)
(252 Snack-Pastry/381 Candy)
773 Items (7 Tray)
(296 Snack-Pastry/477 Candy)



Shown with optional 7th Tray, optional 10.1" Touch Screen and standard Leg Covers



Onboard

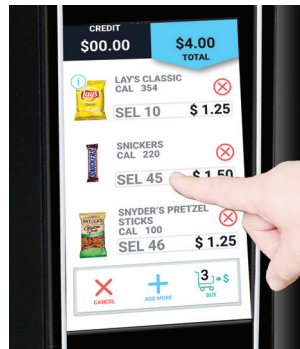


100 % Brighter LED Lighting



10.1" Touch Screen iCart Interface

Optional



ADA Compliant



Full-Size 7th Tray

Optional

3 Glass Front Snack Merchandisers



Shown with standard 3.5" Display, Braille Identified Keypad and Leg Covers

Evoke 5 Snack Merchandiser						
Selections	Up to 65 items					
Capacity	528 Items (210 Snack & Pastry / 318 Candy)					
Electrical Requirements	Domestic: 115 VAC/60Hz, 1.2 AMPS International: 230 VAC/50Hz, 0.6 AMPS					
Dimensions	Height	72" (183 cm)	Width	41" (104 cm)	Depth	35.2" (89.4 cm)
Ship Weight	*564 lbs. (256 kg) *Varies with tray configuration and options.					
Standard Features	FLEX Controller with 3.5" LCD Color Display, LED Lighting, iVend® Sensor System, Door Switch, Delivery Assist, Braille Keypad, Leg Covers, PayRange Mobile Payment System & ADA Compliant					
Options	10.1" Touch Screen Interface, Motor Pairing, Gum and Mint Tray, Audio Interface, Custom Coil and Tray Configurations, Custom Colors, Custom Graphics & Changeable LED Backlit POS & Kick Panel					



Shown with optional kick panel.
Available with Platinum Silver door.

Mercato 5000 Snack Merchandiser						
Selections	Up to 65 items					
Payment Systems	All Industry standard MDB compatible devices					
Data Communication	DEX/UCS					
Electrical Requirements	Domestic: 115 VAC/60Hz, 1.2 AMPS International: 230 VAC/50Hz, 0.6 AMPS					
Dimensions	Height	72" (183 cm)	Width	41.1" (104.4 cm)	Depth	34.75" (88.3 cm)
Shipping Weight	*516 lbs. (234 kg) *Varies with configuration & options.					
Standard Features	GVC2 Controller with Scrolling VF Display, LED Lighting, iVend® Delivery Sensor System, Motor Pairing Capable & Back Lighted Braille Keypad					
Options	iCart Touch Screen Interface with FLEX controller, inDEX Tool, ADA Delivery Bin, Motor Pairing, Additional Gum & Mint Tray, Kick Panel, Custom Colors & Custom Graphics					





Shown with optional iCart/FLEX and kick panel options.
Available with Black door.



Shown with optional kick panel.
Available with Platinum Silver door.

Mercato 4000						
Selections	Up to 52 items					
Standard Configuration	423 Items (128 Snack / 255 Candy / 40 Pastry)					
Payment Systems	All Industry standard MDB compatible devices					
Data Communication	DEX/UCS					
Electrical Requirements	Domestic: 115 VAC/60Hz, 1.2 AMPS International: 230 VAC/50Hz, 0.6 AMPS					
Dimensions	Height	72" (183 cm)	Width	35-5/32" (89 cm)	Depth	34.75" (88.3 cm)
Shipping Weight	*481 lbs. (218.2 kg) *Varies with configuration & options.					
Standard Features	Dual Helix, GVC2 Controller with Scrolling VF Display, LED Lighting, iVend® Delivery Sensor System, Back Lighted Braille Keypad, Motor Pairing Capable, and Gum & Mint Helixes					
Options	iCart Touch Screen Interface with FLEX controller, inDEX Tool, ADA Delivery Bin, Motor Pairing, Additional Gum & Mint Tray, Kick Panel, Custom Colors & Custom Graphics					



Mercato 3000						
Selections	Up to 36 items					
Standard Configuration	360 Items (114/ Snack / 198 Candy / 48 Pastry)					
Payment Systems	All Industry standard MDB compatible devices					
Data Communication	DEX/UCS					
Electrical Requirements	Domestic: 115 VAC/60Hz, 1.2 AMPS International: 230 VAC/50Hz, 0.6 AMPS					
Dimensions	Height	72" (183 cm)	Width	29.3" (74.4 cm)	Depth	34.75" (88.3 cm)
Shipping Weight	*431 lbs. (195.5 kg) *Varies with configuration & options.					
Standard Features	Dual Helix, GVC2 Controller with Scrolling VF Display, LED Lighting, iVend® Delivery Sensor System, Back Lighted Braille Keypad, Motor Pairing Capable and Gum & Mint Helixes					
Options	iCart Touch Screen Interface with FLEX controller, inDEX Tool, ADA Delivery Bin, Motor Pairing, Additional Gum & Mint Tray, Kick Panel, Custom Colors & Custom Graphics					





Evoked Elevator Food

Shown with standard 3.5" Display, Braille Identified Keypad and Leg Covers

Evoked Elevator Food Refrigerated Merchandiser						
Selections	Up to 60 Items					
Capacity	Varies with Tray Configuration					
Payment Systems	All Industry standard MDB Compatible Devices					
Data Communication	DEX/UCS					
Refrigeration	Super 1/3 HP, R134A or R-513A (SNAP Compliant)					
Electrical Requirements	Domestic: 115 VAC/60Hz, 5.5 AMPS International: 230 VAC/50Hz, 3 AMPS; With Heated Glass Option: 115 VAC/60Hz, 6.5 AMPS International: 230 VAC/50Hz, 3.5 AMPS					
Dimensions	Height	72" (183 cm)	Width	41" (104 cm)	Depth	38" (97 cm)
Ship Weight	*831 lbs. (376.9kg) *Varies with tray configuration and options.					
Standard Features	FLEX Controller with 3.5" LCD Color Display, LED Lighting, iVend® Sensor System, Lighted Delivery Bin, Door Switch, Versatile Steel Beverage Tray, Leg Covers, Elevator Delivery, Braille Keypad, Programmable by Individual Selections, Range & Row, PayRange Mobile Payment System & ADA Compliant					
Options	7" iCart Touch Screen Interface, Motor Pairing, High Capacity Can Tray, Audio Interface, Custom Coil and Tray Configurations, Custom Colors, Custom Graphics, Automatic Controller (Heated Glass), Changeable LED Backlit POS & Kick Panel					



Proven Elevator System Gently Delivers Products
 Packaged Meals, Salads, Sandwiches,
 Juices, Carbonated Beverages, Fresh Fruit, Dairy
 Products Including Milk & Yogurt and More!



First in First Out Loading
 Reduces Spoilage up to 30%

20% Greater Capacity
 When compared with competitors

Healthy Safety
 Programmable by selections,
 range and row



Energy Efficient

- Low-E Argon filled insulated glass
- LED lighting
- Thickest foaming on the market with Eco-friendly BASF Autofroth® foaming process
- Balanced airflow design
- Energy saving programmable shutdown modes
- Eco-friendly refrigeration system



Evoke Combo VT5

Shown with optional High Capacity Can Tray, optional 7" Touch Screen and standard Leg Covers



Evoke Combo ST5

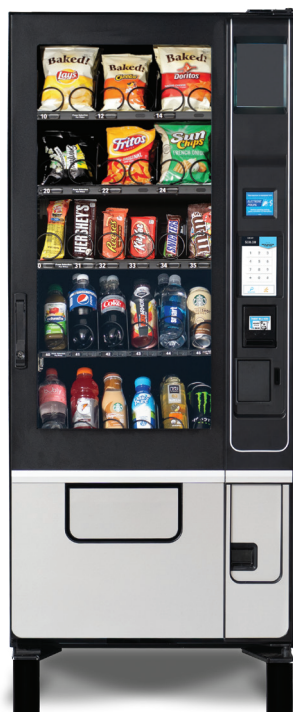
Shown with standard 3.5" Display, Braille Identified Keypad and Leg Covers

Evoke Combo 5 Refrigerated Merchandiser						
Selections	Up to 60 Items					
Capacity	Varies with Tray Configuration					
Payment Systems	All Industry standard MDB Compatible Devices					
Data Communication	DEX/UCS					
Refrigeration	Super 1/3 HP, R134A or R-513A (SNAP Compliant)					
Electrical Requirements	Domestic: 115 VAC/60Hz, 5.5 AMPS International: 230 VAC/50Hz, 3 AMPS; With Heated Glass Option: 115 VAC/60Hz, 6.5 AMPS International: 230 VAC/50Hz, 3.5 AMPS					
Dimensions	Height	72" (183cm)	Width	41" (104 cm)	Depth	38" (97cm)
Ship Weight	*811 lbs. (367.8 kg) *Varies with tray configuration and options.					
Standard Features	FLEX Controller with 3.5" LCD Color Display, LED Lighting, iVend® Sensor System, Door Switch, ADA Delivery Bin, Braille Keypad, Full Health Safety Feature, Leg Covers, PayRange Mobile Payment System & ADA Compliant					
Options	7" iCart Touch Screen Interface, Motor Pairing, High Capacity Can Tray, Audio Interface, Custom Coil and Tray Configurations, Custom Colors, Custom Graphics, Kick Panel, Automatic Controller (Heated Glass) & Changeable LED Backlit POS					



Energy Efficient

- Uses only 3.78 Kwh/day @ 75°F (24°C), 45% RH based on refrigerating 34.6 cu. ft. of space
- Low-E Argon filled insulated glass
- LED lighting
- Thickest foaming on the market with Eco-friendly BASF Autofroth® foaming process
- Balanced airflow design
- Energy saving programmable shutdown modes
- Eco-friendly refrigeration system



Evoke Combo VT3

Shown with optional 7" Touch Screen and standard Leg Covers



Evoke Combo ST3

Shown with standard 3.5" Display, Braille Identified Keypad and Leg Covers

Evoke Combo 3 Refrigerated Merchandiser						
Selections	Up to 36 Items					
Capacity	Varies with Tray Configuration					
Payment Systems	All Industry standard MDB Compatible Devices					
Data Communication	DEX/UCS					
Refrigeration	Super 1/3 HP, R134A or R-513A (SNAP Compliant)					
Electrical Requirements	Domestic: 115 VAC/60Hz, 5.5 AMPS International: 230 VAC/50Hz, 3 AMPS; With Heated Glass Option: 115 VAC/60Hz, 6.5 AMPS International: 230 VAC/50Hz, 3.5 AMPS					
Dimensions	Height	72" (183 cm)	Width	29.5" (75 cm)	Depth	38" (97 cm)
Ship Weight	*691 lbs. (313.4 kg) *Varies with tray configuration and options.					
Standard Features	FLEX Controller with 3.5" LCD Color Display, LED Lighting, iVend® Sensor System, Door Switch, ADA Delivery Bin, Braille Keypad, Full Health Safety Feature, Leg Covers, PayRange Mobile Payment System & ADA Compliant					
Options	7" iCart Touch Screen Interface, Motor Pairing, High Capacity Can Tray, Audio Interface, Custom Coil and Tray Configurations, Custom Colors, Custom Graphics, Kick Panel, Automatic Controller (Heated Glass) & Changeable LED Backlit POS					



Energy Efficient

- Uses only 3.20 Kwh/day @ 75°F (24°C), 45% RH based on refrigerating 34.6 cu. ft. of space
- Low-E Argon filled insulated glass
- LED lighting
- Thickest foaming on the market with Eco-friendly BASF Autofroth® foaming process
- Balanced airflow design
- Energy saving programmable shutdown modes
- Eco-friendly refrigeration system



Evoke Combo Outdoor VT5

Evoke Combo Outdoor ST5

Shown with standard 3.5" Display, Braille Identified Keypad and Leg Covers

Evoke Combo 5 Outdoor						
Selections	Up to 60 Items					
Capacity	Varies with tray configuration					
Payment Systems	All Industry standard MDB Compatible Devices					
Data Communication	DEX/UCS					
Refrigeration	Super 1/3 HP, R134A or R-513A (SNAP Compliant)					
Electrical Requirements	Domestic: 115 VAC/60Hz, 5.5 AMPS International: 230 VAC/50Hz, 3 AMPS; With Heated Glass Option: 115 VAC/60Hz, 6.5 AMPS International: 230 VAC/50Hz, 3.5 AMPS					
Dimensions	Height	72" (183 cm)	Width	45" (114 cm)	Depth	40" (102 cm)
Ship Weight	*830 lbs. (376.5 kg) *Varies with tray configuration and options.					
Standard Features	Outdoor Package, GVC2 Controller, Leg Covers, LED Lighting, iVend® Sensor System, and Door Switch, ADA Delivery Bin, ADA Compliant					
Options	6th Tray, Dual Helix, Motor Pairing, 10 Select Can/Bottle, Heated Glass, High Capacity Can Tray, inDEX Tool, Custom Graphics & Kick Panel					



Outdoor Package
Impact resistant Lexan window cover, rain guards and anti-pry covers provide superior resistance to the elements, vandals and thieves.

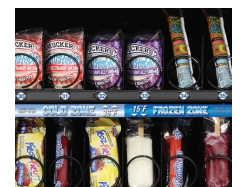


Shown with Platinum Silver door and Kick Panel option
Available with Black door.

Alpine Combi 3000 Cold/Frozen						
Selections	Up to 36 Items					
Capacity	320 Items, Configurable up to 540					
Payment Systems	All Industry standard MDB Compatible Devices					
Data Communication	DEX/UCS					
Refrigeration	½ HP, R-404A or R-452A (SNAP Compliant)					
Electrical Requirements	Domestic: 115 VAC/60Hz, 13 AMPS International: 230 VAC/50Hz, 6.5 AMPS					
Dimensions	Height	72" (183 cm)	Width	29.5" (75 cm)	Depth	38" (97 cm)
Ship Weight	*680 lbs. (308.4 kg) *Varies with tray configuration and options.					
Standard Features	iVend® Delivery Sensor System, LED lighting, Heated Glass and High Efficiency Modular Refrigeration System					
Options	Delivery Assist Box, InDEX Tool, Motor Pairing, Dual Helix, Can & Bottle Tray, Custom Graphics & Kick Panel					



Available in Multi-Zone Configuration or Full Frozen Configuration
Vend refrigerated foods from the top zone at 36°F and frozen deserts at -15°F from the bottom.



Fresh Brew, Freeze Dried and Bean-to-Cup Models Available



Shown with Platinum Silver door and Kick Panel option
Available with Black door.

Geneva Hot Beverage Merchandiser						
Selections	11 Major Selections & up to 34 Beverage Combinations of Coffee, Specialty Coffees, Hot chocolate, Tea, Cappuccino & Espresso					
Capacity	Up to 400 - 7 oz (210 ml) squat cups; Up to 384 - 12 oz (355 ml) cups Accommodates cups up to a lip diameter of 2.9-3.25" (73-82.5 mm)					
Payment Systems	All Industry standard MDB Compatible Devices					
Data Communication	DEX/UCS, EVA-DTS compatible, USB copy/clone feature					
Electrical Requirements	Domestic: 115 VAC/60Hz., 9.5 AMPS; International: 230 VAC/50Hz 9 AMPS					
Dimensions	Height	72" (183 cm)	Width	27.5" (70.5 cm)	Depth	28" (71 cm)
Ship Weight	*361 lbs. (163.7 kg) *Varies with configuration and options.					
Standard Features	LED lighting, iVend® Delivery Sensor System, Advanced Power Management System, Automatic Delivery Door, Timed Free Vend, Discounting, One Touch Servicing					
Options	Fresh Brew, Freeze Dry and New Bean-to-Cup Models, USB Programming Harness, Custom Colors, Custom Graphics and Kick Panel					



CTop Single Serve Coffee Pod Merchandiser						
Selections	Up to 16 Selections					
Capacity	256 Items (16 items per selection)					
Payment Systems	All Industry standard MDB Compatible Devices					
Data Communication	DEX/UCS					
Electrical Requirements	Domestic: 115 VAC/60Hz., 1.0 AMPS; International: 230 VAC/50Hz 0.5 AMPS					
Dimensions	Height	17.6" (44.7 cm)	Width	26.3" (66.8 cm)	Depth	23.8" (60.5 cm)
Ship Weight	151 lbs. (68.5 kg)					
Standard Features	LED Lighting, iVend® Delivery Sensor System and Braille Keypad					
Options	DEX Capability with Optional DEX Harness					





Evoke Elevator Cold Beverage
Shown with optional 7" Touch Screen
and standard Leg Covers

Evoke Elevator Cold Beverage Refrigerated Merchandiser						
Selections	Up to 40 Items					
Capacity	Varies with Tray Configuration					
Payment Systems	All Industry standard MDB Compatible Devices					
Data Communication	DEX/UCS					
Refrigeration	Super 1/3 HP, R134A or R-513A (SNAP Compliant)					
Electrical Requirements	Domestic: 115 VAC/60Hz, 5.5 AMPS International: 230 VAC/50Hz, 3 AMPS; With Heated Glass Option: 115 VAC/60Hz, 6.5 AMPS International: 230 VAC/50Hz, 3.5 AMPS					
Dimensions	Height	72" (183 cm)	Width	41" (104 cm)	Depth	38" (97 cm)
Ship Weight	*831lbs. (376.9kg) *Varies with tray configuration and options.					
Standard Features	FLEX Controller with 3.5" LCD Color Display, LED Lighting, iVend® Sensor System, Lighted Delivery Bin, Door Switch, Versatile Steel Beverage Tray, Elevator Delivery, ADA Delivery Bin, Braille Keypad, Full Health Safety Feature, Leg Covers, PayRange Mobile Payment System & ADA Compliant					
Options	7" iCart Touch Screen Interface, Motor Pairing, High Capacity Can Tray, Audio Interface, Custom Coil and Tray Configurations, Custom Colors, Custom Graphics, Automatic Controller (Heated Glass), Changeable LED Backlit POS & Kick Panel					



Summit 500 Cold Drink Vendor						
Selections	10 Selections					
Capacity	12 oz (355 ml) Can: 500 *20 oz (591 ml) Bottle: 240 *24 oz (710 ml) Bottle: 240 *Capacities vary depending on packaging.					
Payment Systems	All Industry standard MDB Compatible Devices					
Data Communication	DEX/UCS					
Refrigeration	Super 1/3 HP, R-513a (SNAP Compliant)					
Electrical Requirements	Domestic: 115 VAC/60Hz., 5.5 AMPS; International: 230 VAC/50Hz 2.5 AMPS					
Dimensions	Height	72" (183 cm)	Width	31.75" (80.7 cm)	Depth	36.5" (92.7 cm)
Ship Weight	*671lbs (304.3 kg) *Varies with options.					
Standard Features	Delivery Drop Sensor, Live Product Display, Eye Catching Back Lighted Display					
Options	inDEX Tool (Pricing Only), Custom Colors, Custom Graphics, Extra 16.9oz filler, 250ml kit, 500 ml kit					



*In order to bring you the best products possible, we continue to improve product design and performance and as such specifications are subject to change without notice. The manufacturer makes no warranties or representations of compliance with any local, state, national or international requirements for the operation of the equipment in any application for which it is capable of being used beyond the UL and NAMA approvals listed on the product. Any purchaser is required to make an independent analysis of the fitness and legality of the product's usage before it is deployed and must continue to monitor the potential changing nature of compliance requirements. The manufacturer expressly disclaims responsibility for compliance with any laws and affirmatively requires any buyer to make an independent analysis of the fitness and legal basis of any use or application of the subject unit.

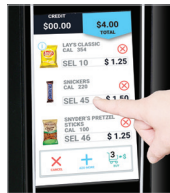
Standard Features & Options

U-Select-It's full line of vendors are packed full of features and available options to help you market more effectively.



Electronic Controllers and Operator Interface

- Expanded sales and accounting features
- Back lighted keypad with Braille identification
- Bright LED display



iCART

Touch Screen Interfaces (Optional)

Enhances consumer purchase experience. Available with Shopping Cart and Product Info Browse Mode. Communicates purchase information & messages



iVend® Ensured Delivery Sensing Technology

Infrared sensor system virtually eliminates misvends and ensures that your customers receive their products or their money back.



Motor Pairing

Enables pairing two motors together for dispensing wide products.



Cashless (Optional)

Greenlite Cashless accepts credit, debit & mobile payments.



Flex Shelf Technology

USI vendors feature the most versatile trays on the market with features that make a difference in your bottom line.

- Tilting shelves for easy loading
- Quick change motors and dividers for easy in-field configuration changes
- Adjustable snack and candy selections
 - Full snack (5 3/4"W)
 - 3/4 snack (4 5/16"W)
 - Candy (2 7/8"W)
- 360 - degree helix adjustability in 20 - degree increments provides flexibility to vend virtually anything



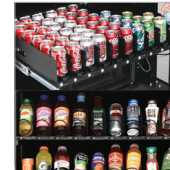
Gum & Mint Tray (Optional)

Gum & Mint Tray option dispenses blister pack gum, rolled mints and even popular energy shots. Available on Mercato 4000, 5000 and Evoke 5.



PUSH-IT Delivery System (Optional)

PUSH-IT easily adapts to many different products, makes restocking simple, and protects against misloading.



Versatile Steel Beverage Tray Options

Holds up to 60 canned or bottle beverages. 9 and 10 Select Trays Available.



ADA Delivery Bin (Optional) Standard on Evoke

Product is delivered at 15" via lift mechanism. Operates with one hand.



Tray and Helix Configurations (Optional)

Single and Dual Helix Configurations allow great flexibility in package dispensing.



High Capacity Can Tray (Optional)

Add up to 150 - 12 oz cans to your Alpine ST & VT vendors with this patented option.



Heated Glass

Optimum for use in high humidity locations. Standard on Alpine Combi 3000. Optional Evoke Combo ST/VT5 and ST/VT3.



High Security Kit

Impact resistant Lexan window cover, rain guards and anti-pry covers provide superior resistance to the elements, vandals and thieves. *Some features vary by model please consult manufacturer.



Kick Panel (Optional)

Removable bottom panel provides aesthetically pleasing continuous presentation.



Custom Graphics (Optional)

Make your brand, product and marketing initiatives stand out with billboard graphics applied to your equipment.



USB Software Upgrades and DEX Downloads with Evoke and Geneva

Never miss a sale with Greenlite Cashless



Give your business the **Greenlite** to grow.



By accepting cashless payment options, including credit, debit and mobile payments, you can increase sales by 30% or more while increasing operational efficiencies.

Features:



Engineered for Mobile Payments



Integrated Cash Management



Timely Deposits, Clear Pricing, Faster Profits



Real-Time Reporting



Advanced Security



Remote Inventory Management



Remote monitoring and pricing

Payment Systems – Conlux Coin Changes and Bill Validators



Other cash & credit payment systems including international are available. Please contact U-Select-It for quote.



Conlux CV 1000 Series

Coin Changers



Model	Type	Currency/Capacity
MCM5-1	MDB	5 Tube Cassette - 25¢, 5¢, 25¢, 10¢, 25¢
MCM5-5	MDB	5 Tube Cassette - \$1, 5¢, 25¢, 10¢, 25¢

Bill Validators



Model	Type	Currency/Capacity
CV1012-U3M	MDB	U.S. 300 Bill Capacity - \$1-\$20 and Coupon - Bottler Front Bezel
CV1012-U5M	MDB	U.S. 500 Bill Capacity - \$1-\$20 and Coupon - Full Line Front Bezel
CV1012-U5M	MDB	U.S. 500 Bill Capacity - \$1-\$20 and Coupon - Bottler

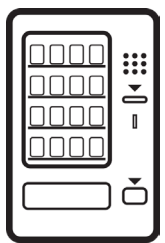


Conlux MCM5 Series

Financing

Competitive Financing Available

Innovative Finance Solutions Available For:



New Vending Equipment



Route Acquisition



Parts



Cashless Readers



Micro Markets

Leasing options also available

Since 1952, we have helped customers grow their vending businesses and reach their goals by providing flexible, competitive financing solutions.

Warranty and Service

Exceptional Quality Backed by Added Assurance

Premium 2-Year Warranty

Nothing drives us to do better than our commitment to your peace of mind. That's why every new USI merchandiser comes with a **premium 2-year warranty***. True value is owning a quality merchandiser without repair worries.



If on-site support is required, our worldwide network of full-service distributors and service centers are available to assist you.

**Terms and conditions apply. Contact U-Select-It for full warranty coverage details.*