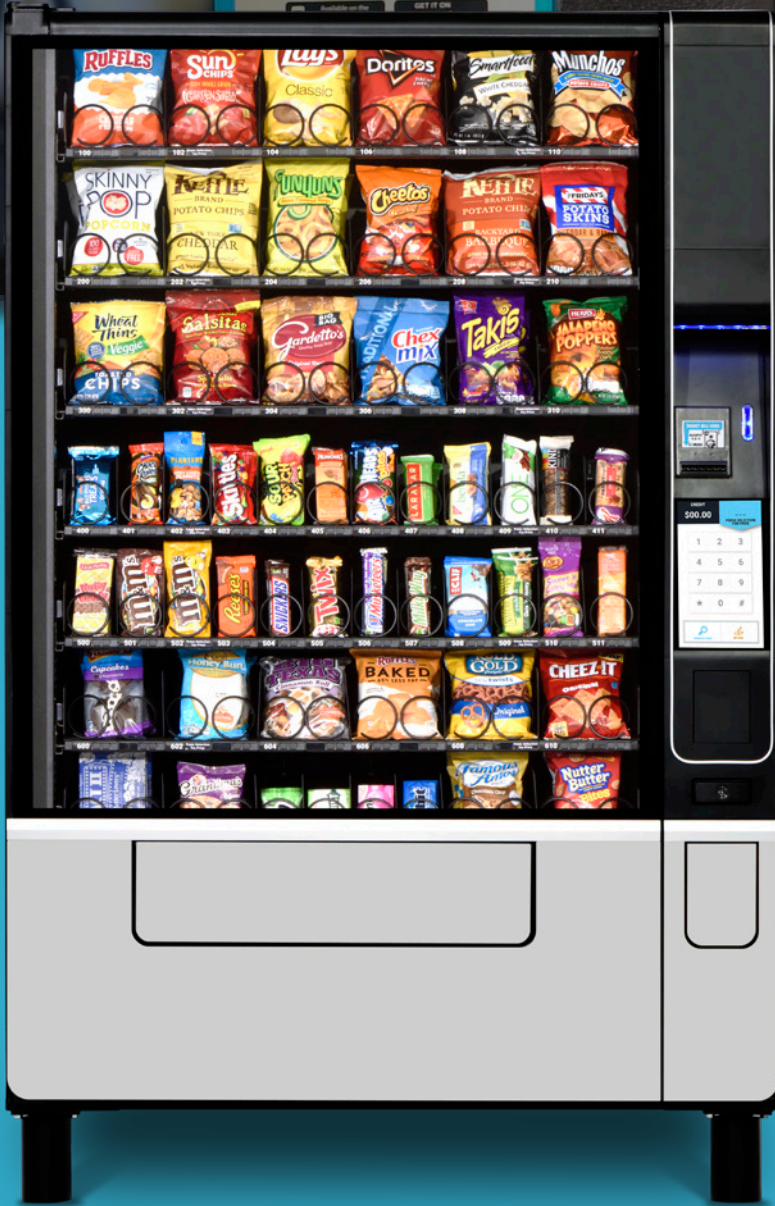





U-SELECT-IT

2023

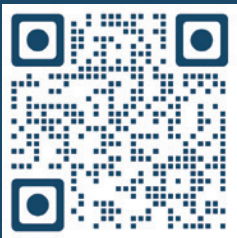
Product Guide



| | | |
|---|--|---------------------------------|
| CREDIT | 0.00 | \$7.00 |
| | | TOTAL |
|  | Planters Salted Peanuts CAL 250 SEL 42 | <input type="checkbox"/> \$1.00 |
|  | Odwalla Original Superfood Juice 15.2 fl CAL 240 SEL 56 | <input type="checkbox"/> \$2.00 |
|  | FR, TRIANGLE HAM WHEAT SEL 10 | <input type="checkbox"/> \$4.00 |



EXPERIENCE THE
**LOWEST COST
OF OWNERSHIP**
IN THE INDUSTRY

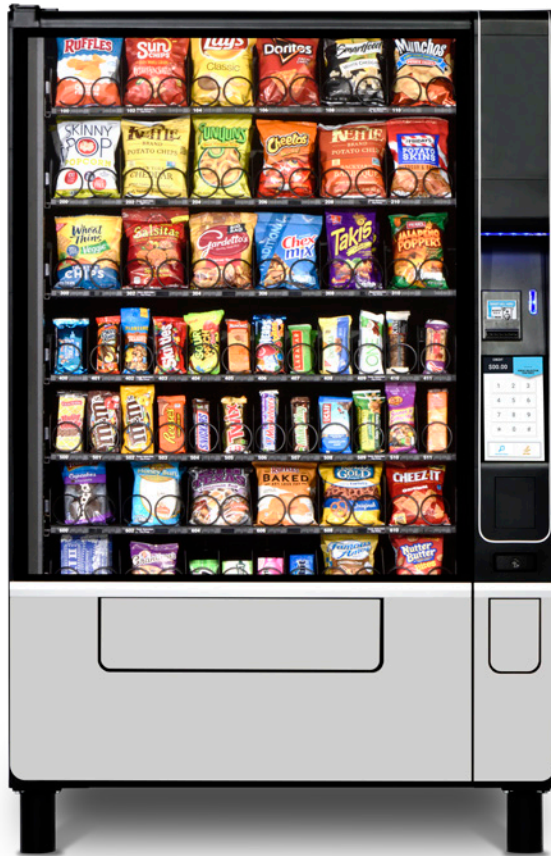


VISIT USELECTIT.COM



1-800-247-8709 • www.uselectit.com





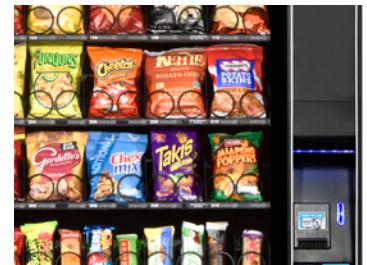
Evolve 6 Snack Merchandiser

| | | | | | | |
|--------------------------------|--|-----------------|-------|-------------------|-------|--------------------|
| Selections | Up to 70 items (6 Tray); 82 Items (7 Tray) | | | | | |
| Electrical Requirements | Domestic: 115 VAC/60Hz, 1.2 AMPS International: 230 VAC/50Hz, 0.6 AMPS | | | | | |
| Dimensions | Height | 72" (183 cm) | Width | 46" (116.8 cm) | Depth | 35.2" (89.4 cm) |
| Ship Weight | *626 lbs. (283.9 kg) *Varies with tray configuration and options. | | | | | |
| Standard Features | FLEX Controller with 3.5" LCD Color Display, LED Lighting, iVend® Sensor System, Door Switch, Delivery Assist, Braille Keypad, Leg Covers, PayRange Mobile Payment System & ADA Compliant | | | | | |
| Options | 7th Full Size Tray, UVend Technology, 10.1" Touch Screen Interface, Motor Pairing, Audio Interface, Custom Coil and Tray Configurations, Custom Colors, Custom Graphics, Kick Panel & Changeable LED Backlit POS | | | | | |



Product Capacity and Flexibility

633 Items (6 Tray)
(252 Snack-Pastry/381 Candy)
773 Items (7 Tray)
(296 Snack-Pastry/477 Candy)

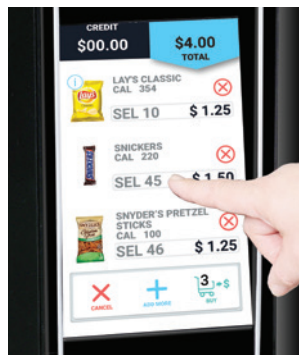


Shown with optional 7th tray, optional 10.1" touch screen and standard leg covers.



10.1" Touch Screen iCart Interface

Optional



ADA Compliant



Full-Size 7th Tray

Optional

3 Glass Front Snack Merchandisers



Shown with standard 3.5" display, braille identified keypad and leg covers.



Available with platinum silver door.

Evoke 5 Snack Merchandiser

| | | | | | | |
|--------------------------------|--|-----------------|-------|-----------------|-------|--------------------|
| Selections | Up to 65 items | | | | | |
| Capacity | 528 Items (210 Snack & Pastry / 318 Candy) | | | | | |
| Payment Systems | All Industry standard MDB compatible devices | | | | | |
| Data Communication | DEX/UCS | | | | | |
| Electrical Requirements | Domestic: 115 VAC/60Hz, 1.2 AMPS International: 230 VAC/50Hz, 0.6 AMPS | | | | | |
| Dimensions | Height | 72" (183 cm) | Width | 41" (104 cm) | Depth | 35.2" (89.4 cm) |
| Ship Weight | *564 lbs. (256 kg) *Varies with tray configuration and options. | | | | | |
| Standard Features | FLEX Controller with 3.5" LCD Color Display, LED Lighting, iVend® Sensor System, Door Switch, Delivery Assist, Braille Keypad, Leg Covers, PayRange Mobile Payment System & ADA Compliant | | | | | |
| Options | 10.1" Touch Screen Interface, UVend Technology, Motor Pairing, Gum and Mint Tray, Audio Interface, Custom Coil and Tray Configurations, Custom Colors, Custom Graphics & Changeable LED Backlit POS & Kick Panel | | | | | |



Mercato 5000 Snack Merchandiser

| | | | | | | |
|--------------------------------|---|-----------------|-------|---------------------|-------|---------------------|
| Selections | Up to 65 items | | | | | |
| Payment Systems | All Industry standard MDB compatible devices | | | | | |
| Data Communication | DEX/UCS | | | | | |
| Electrical Requirements | Domestic: 115 VAC/60Hz, 1.2 AMPS International: 230 VAC/50Hz, 0.6 AMPS | | | | | |
| Dimensions | Height | 72" (183 cm) | Width | 41.1" (104.4 cm) | Depth | 34.75" (88.3 cm) |
| Shipping Weight | *516 lbs. (234 kg) *Varies with configuration & options. | | | | | |
| Standard Features | GVC2 Controller with Scrolling VF Display, LED Lighting, iVend® Delivery Sensor System, Motor Pairing Capable & Back Lighted Braille Keypad | | | | | |
| Options | iCart Touch Screen Interface with FLEX controller, UVend Technology, inDEX Tool, ADA Delivery Bin, Motor Pairing, Additional Gum & Mint Tray, Kick Panel, Custom Colors & Custom Graphics | | | | | |





Shown with optional 7" touch screen. Available with black door.



Available with platinum silver door.

Mercato 4000 Snack Merchandiser

| | | | | | | |
|--------------------------------|---|-----------------|-------|---------------------|-------|---------------------|
| Selections | Up to 52 items | | | | | |
| Standard Configuration | 423 Items (128 Snack / 255 Candy / 40 Pastry) | | | | | |
| Payment Systems | All Industry standard MDB compatible devices | | | | | |
| Data Communication | DEX/UCS | | | | | |
| Electrical Requirements | Domestic: 115 VAC/60Hz, 1.2 AMPS International: 230 VAC/50Hz, 0.6 AMPS | | | | | |
| Dimensions | Height | 72" (183 cm) | Width | 35-5/32" (89 cm) | Depth | 34.75" (88.3 cm) |
| Shipping Weight | *481 lbs. (218.2 kg) *Varies with configuration & options. | | | | | |
| Standard Features | Dual Helix, GVC2 Controller with Scrolling VF Display, LED Lighting, iVend® Delivery Sensor System, Back Lighted Braille Keypad, Motor Pairing Capable, and Gum & Mint Helixes | | | | | |
| Options | iCart Touch Screen Interface with FLEX controller, UVend Technology, inDEX Tool, ADA Delivery Bin, Motor Pairing, Additional Gum & Mint Tray, Kick Panel, Custom Colors & Custom Graphics | | | | | |



ADA
COMPATIBLE



Mercato 3000 Snack Merchandiser

| | | | | | | |
|--------------------------------|---|-----------------|-------|--------------------|-------|---------------------|
| Selections | Up to 36 items | | | | | |
| Standard Configuration | 360 Items (114/ Snack / 198 Candy / 48 Pastry) | | | | | |
| Payment Systems | All Industry standard MDB compatible devices | | | | | |
| Data Communication | DEX/UCS | | | | | |
| Electrical Requirements | Domestic: 115 VAC/60Hz, 1.2 AMPS International: 230 VAC/50Hz, 0.6 AMPS | | | | | |
| Dimensions | Height | 72" (183 cm) | Width | 29.3" (74.4 cm) | Depth | 34.75" (88.3 cm) |
| Shipping Weight | *431 lbs. (195.5 kg) *Varies with configuration & options. | | | | | |
| Standard Features | Dual Helix, GVC2 Controller with Scrolling VF Display, LED Lighting, iVend® Delivery Sensor System, Back Lighted Braille Keypad, Motor Pairing Capable and Gum & Mint Helixes | | | | | |
| Options | iCart Touch Screen Interface with FLEX controller, inDEX Tool, UVend Technology, ADA Delivery Bin, Motor Pairing, Additional Gum & Mint Tray, Kick Panel, Custom Colors & Custom Graphics | | | | | |



ADA
COMPATIBLE

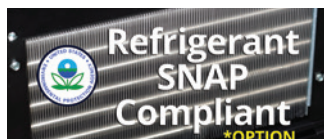




Evoke Elevator

Shown with standard 3.5" display and braille identified keypad.

| Evoke Elevator Refrigerated Merchandiser | | | | | | |
|--|--|-----------------|-------|-----------------|-------|----------------|
| Selections | Up to 60 Items | | | | | |
| Capacity | Varies with Tray Configuration | | | | | |
| Payment Systems | All Industry standard MDB Compatible Devices | | | | | |
| Data Communication | DEX/UCS | | | | | |
| Refrigeration | Super 1/3 HP, R134A | | | | | |
| Electrical Requirements | Domestic: 115 VAC/60Hz, 8 AMPS International: 230 VAC/50Hz, 4 AMPS; With Heated Glass Option: 115 VAC/60Hz, 9 AMPS International: 230 VAC/50Hz, 4.5 AMPS | | | | | |
| Dimensions | Height | 72" (183 cm) | Width | 41" (104 cm) | Depth | 38" (97 cm) |
| Ship Weight | *831lbs. (376.9kg) *Varies with tray configuration and options. | | | | | |
| Standard Features | FLEX Controller with 3.5" LCD Color Display, LED Lighting, iVend® Sensor System, Lighted Delivery Bin, Door Switch, Versatile Steel Beverage Tray, Leg Covers, Elevator Delivery, Braille Keypad, Programmable by Individual Selections, Range & Row, PayRange Mobile Payment System & ADA Compliant | | | | | |
| Options | 7" iCart Touch Screen Interface, UVend Technology, Motor Pairing, High Capacity Can Tray, Audio Interface, Custom Coil and Tray Configurations, Custom Colors, Custom Graphics, Automatic Controller (Heated Glass), Changeable LED Backlit POS, R-513A (SNAP Compliant) Refrigeration & Kick Panel | | | | | |



Proven Elevator System Gently Delivers Products

Packaged Meals, Salads, Sandwiches, Juices, Carbonated Beverages, Fresh Fruit, Dairy Products Including Milk &



First in First Out Loading

Reduces Spoilage up to 30%



20% Greater Capacity

When compared with competitors



Health Safety

Programmable by selections, range and row



Evoke VT5

Shown with optional High Capacity Can Tray, optional 7" touch screen and standard leg covers.



Evoke ST5

Shown with standard 3.5" display, braille identified keypad and standard leg covers.

Evoke 5 Refrigerated Merchandiser

| | | | | | | |
|--------------------------------|---|----------------|-------|-----------------|-------|---------------|
| Selections | Up to 60 Items | | | | | |
| Capacity | Varies with Tray Configuration | | | | | |
| Payment Systems | All Industry standard MDB Compatible Devices | | | | | |
| Data Communication | DEX/UCS | | | | | |
| Refrigeration | Super 1/3 HP, R134A | | | | | |
| Electrical Requirements | Domestic: 115 VAC/60Hz, 8 AMPS International: 230 VAC/50Hz, 4 AMPS With Heated Glass Option: 115 VAC/60Hz, 9 AMPS International: 230 VAC/50Hz, 4.5 AMPS | | | | | |
| Dimensions | Height | 72" (183cm) | Width | 41" (104 cm) | Depth | 38" (97cm) |
| Ship Weight | *811 lbs. (367.8 kg) *Varies with tray configuration and options. | | | | | |
| Standard Features | FLEX Controller with 3.5" LCD Color Display, LED Lighting, iVend® Sensor System, Door Switch, ADA Delivery Bin, Braille Keypad, Full Health Safety Feature, Leg Covers, PayRange Mobile Payment System & ADA Compliant | | | | | |
| Options | 7" iCart Touch Screen Interface, UVend Technology, Motor Pairing, High Capacity Can Tray, Audio Interface, Custom Coil and Tray Configurations, Custom Colors, Custom Graphics, Kick Panel, Automatic Controller (Heated Glass), R-513A (SNAP Compliant) Refrigeration & Changeable LED Backlit POS | | | | | |



Evoke VT3

Shown with optional High Capacity Can Tray, optional 7" touch screen and standard leg covers

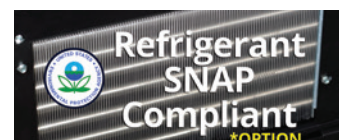


Evoke ST3

Shown with standard 3.5" display, braille identified keypad and leg covers.

Evoke 3 Refrigerated Merchandiser

| | | | | | | |
|--------------------------------|---|-----------------|-------|------------------|-------|----------------|
| Selections | Up to 36 Items | | | | | |
| Capacity | Varies with Tray Configuration | | | | | |
| Payment Systems | All Industry standard MDB Compatible Devices | | | | | |
| Data Communication | DEX/UCS | | | | | |
| Refrigeration | Super 1/3 HP, R134A | | | | | |
| Electrical Requirements | Domestic: 115 VAC/60Hz, 8 AMPS International: 230 VAC/50Hz, 4 AMPS With Heated Glass Option: 115 VAC/60Hz, 9 AMPS International: 230 VAC/50Hz, 4.5 AMPS | | | | | |
| Dimensions | Height | 72" (183 cm) | Width | 29.5" (75 cm) | Depth | 38" (97 cm) |
| Ship Weight | *691 lbs. (313.4 kg) *Varies with tray configuration and options. | | | | | |
| Standard Features | FLEX Controller with 3.5" LCD Color Display, LED Lighting, iVend® Sensor System, Door Switch, ADA Delivery Bin, Braille Keypad, Full Health Safety Feature, Leg Covers, PayRange Mobile Payment System & ADA Compliant | | | | | |
| Options | 7" iCart Touch Screen Interface, Motor Pairing, UVend Technology, High Capacity Can Tray, Audio Interface, Custom Coil and Tray Configurations, Custom Colors, Custom Graphics, Kick Panel, Automatic Controller (Heated Glass), R-513A (SNAP Compliant) Refrigeration & Changeable LED Backlit POS | | | | | |





Evoke Outdoor VT

Evoke Outdoor ST

Shown with standard 3.5" display, braille identified keypad and leg covers.

| Evoke Outdoor Refrigerated Merchandiser | | | | | | |
|---|--|-----------------|-------|-----------------|-------|-----------------|
| Selections | Up to 60 Items | | | | | |
| Capacity | Varies with tray configuration | | | | | |
| Payment Systems | All Industry standard MDB Compatible Devices | | | | | |
| Data Communication | DEX/UCS | | | | | |
| Refrigeration | Super 1/3 HP, R134A or R-513A (SNAP Compliant) | | | | | |
| Electrical Requirements | Domestic: 115 VAC/60Hz, 8 AMPS International: 230 VAC/50Hz, 4 AMPS With Heated Glass Option: 115 VAC/60Hz, 9 AMPS International: 230 VAC/50Hz, 4.5 AMPS | | | | | |
| Dimensions | Height | 72" (183 cm) | Width | 45" (114 cm) | Depth | 40" (102 cm) |
| Ship Weight | *830 lbs. (376.5 kg) *Varies with tray configuration and options. | | | | | |
| Standard Features | Outdoor Package, GVC2 Controller, Heated Glass, Leg Covers, LED Lighting, ADA Delivery Bin, ADA Compliant, iVend® Sensor System, and Door Switch | | | | | |
| Options | 6th Tray, Dual Helix, Motor Pairing, 10 Select Can/Bottle, UVend Technology, High Capacity Can Tray, inDEX Tool, R-513A (SNAP Compliant) Refrigeration, Custom Graphics and Kick Panel | | | | | |



Outdoor Package

Impact resistant Lexan window cover, rain guards and anti-pry covers provide superior resistance to the elements, vandals and thieves.



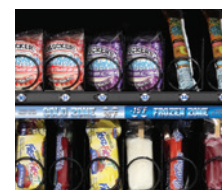
Shown with platinum silver door.
Available with black door.

| Alpine Combi 3000 Refrigerated/Frozen Merchandiser | | | | | | |
|--|--|-----------------|-------|------------------|-------|----------------|
| Selections | Up to 36 Items | | | | | |
| Capacity | 320 Items, Configurable up to 540 | | | | | |
| Payment Systems | All Industry standard MDB Compatible Devices | | | | | |
| Data Communication | DEX/UCS | | | | | |
| Refrigeration | ½ HP, R-404A | | | | | |
| Electrical Requirements | Domestic: 115 VAC/60Hz, 13 AMPS International: 230 VAC/50Hz, 6.5 AMPS | | | | | |
| Dimensions | Height | 72" (183 cm) | Width | 29.5" (75 cm) | Depth | 38" (97 cm) |
| Ship Weight | *680 lbs. (308.4 kg) *Varies with tray configuration and options. | | | | | |
| Standard Features | iVend® Delivery Sensor System, LED lighting, Heated Glass and High Efficiency Modular Refrigeration System | | | | | |
| Options | Delivery Assist Box, InDEX Tool, UVend Technology, Motor Pairing, Dual Helix, Can & Bottle Tray, Custom Graphics, R-452A (SNAP Compliant) Refrigeration & Kick Panel | | | | | |



Available in Multi-Zone Configuration or Full Frozen Configuration

Vend refrigerated foods from the top zone at 36°F and frozen deserts at -15°F from the bottom.



Fresh Brew and Freeze Dried Models Available



Evoke Coffee Hot Beverage Merchandiser

| | | | | | | |
|--------------------------------|---|-----------------|-------|--------------------|-------|----------------|
| Selections | 11 Major Selections & up to 34 Beverage Combinations of Coffee, Specialty Coffees, Hot chocolate, Tea, Cappuccino & Espresso | | | | | |
| Capacity | Up to 400 - 7 oz (210 ml) squat cups; Up to 384 - 12 oz (355 ml) cups Accommodates cups up to a lip diameter of 2.9-3.25" (73-82.5 mm) | | | | | |
| Payment Systems | All Industry standard MDB Compatible Devices | | | | | |
| Data Communication | DEX/UCS, EVA-DTS compatible, USB copy/clone feature | | | | | |
| Electrical Requirements | Domestic: 115 VAC/60Hz., 9.6 AMPS; International: 230 VAC/50Hz 4.8 AMPS | | | | | |
| Dimensions | Height | 72" (183 cm) | Width | 27.5" (70.5 cm) | Depth | 28" (71 cm) |
| Ship Weight | *361 lbs. (163.7 kg) *Varies with configuration and options. | | | | | |
| Water Requirement | 15-116 psi (1-8 Bar) | | | | | |
| Standard Features | LED lighting, iVend® Delivery Sensor System, Advanced Power Management System, Automatic Delivery Door, Timed Free Vend, Discounting, One Touch Servicing | | | | | |
| Options | Fresh Brew and Freeze Dry Models, USB Programming Harness, Custom Colors, Custom Graphics, UVend Technology and Kick Panel | | | | | |



Evoke 500 Cold Drink Vendor

| | | | | | | |
|--------------------------------|---|-----------------|-------|---------------------|-------|--------------------|
| Selections | 10 Selections | | | | | |
| Capacity | 12 oz (355 ml) Can: 500 *20 oz (591ml) Bottle: 240 *24 oz (710 ml) Bottle: 240 *Capacities vary depending on packaging. | | | | | |
| Payment Systems | All Industry standard MDB Compatible Devices | | | | | |
| Data Communication | DEX/UCS | | | | | |
| Refrigeration | Super 1/3 HP, R-513a (SNAP Compliant) | | | | | |
| Electrical Requirements | Domestic: 115 VAC/60Hz., 7 AMPS; International: 230 VAC/50Hz 3.5 AMPS | | | | | |
| Dimensions | Height | 72" (183 cm) | Width | 31.75" (80.7 cm) | Depth | 36.5" (92.7 cm) |
| Ship Weight | *671lbs (304.3 kg) *Varies with options. | | | | | |
| Standard Features | Delivery Drop Sensor, Live Product Display, Eye Catching Back Lighted Display | | | | | |
| Options | inDEX Tool (Pricing Only), UVend Technology, Custom Colors, Custom Graphics, Extra 16.9oz filler, 250ml kit, 500 ml kit | | | | | |





DELIVERY LOCKERS

Available on the App Store

ANDROID APP ON Google play

Allow end-users to streamline their mobile ordering or pick-up experience with a complete end-to-end contactless experience.

Shown with Optional Graphics Wrap and Touch Screen

INCREASE ORDER THROUGHPUT



Improves operations and reduces costs by eliminating bottlenecks and improving customer throughput

KEEPS FOOD FRESH



Insulated cubbies keep hot and cold food viable for 30+ minutes at a time

REDUCES ORDER MIX-UPS



Create pick-up efficiencies and reduce order mix-ups



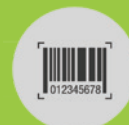
Self Service Convenience with the Security you Need
Vending + Micro Market Hybrid



PAY



GRAB



SCAN



CHECK OUT

*In order to bring you the best products possible, we continue to improve product design and performance and as such specifications are subject to change without notice. The manufacturer makes no warranties or representations of compliance with any local, state, national or international requirements for the operation of the equipment in any application for which it is capable of being used beyond the UL and NEMA approvals listed on the product. Any purchaser is required to make an independent analysis of the fitness and legality of the product's usage before it is deployed and must continue to monitor the potential changing nature of compliance requirements. The manufacturer expressly disclaims responsibility for compliance with any laws and affirmatively requires any buyer to make an independent analysis of the fitness and legal basis of any use or application of the subject unit.

Standard Features & Options

U-Select-It's full line of vendors are packed full of features and available options to help you market more effectively.



Electronic Controllers and Operator Interface

- Expanded sales and accounting features
- Back lighted keypad with Braille identification
- Bright LED display



Cashless (Optional)

Greenlight Cashless accepts credit, debit & mobile payments.



PUSH-IT Delivery System (Optional)

PUSH-IT easily adapts to many different products, makes restocking simple, and protects against misloading.



ADA Delivery Bin (Optional) Standard on Evoke

Product is delivered at 15" via lift mechanism. Operates with one hand.



Heated Glass

Optimum for use in high humidity locations. Standard on Alpine Combi 3000 and Evoke Outdoor ST/VT. Optional Evoke ST/VT5 and ST/VT3.



Kick Panel (Optional)

Removable bottom panel provides aesthetically pleasing continuous presentation.



UVend Technology (Optional)

Quickly and safely sanitizes the machine's high-touch surfaces with UVC light



iCART

10.1" or 7" Touch Screen Interfaces (Optional)

Enhances consumer purchase experience. Available with Shopping Cart and Product Info Browse Mode. Communicates purchase information & messages



Flex Shelf Technology

USI vendors feature the most versatile trays on the market with features that make a difference in your bottom line.

- Tilting shelves for easy loading
- Quick change motors and dividers for easy in-field configuration changes
- Adjustable snack and candy selections
 - Full snack (5 3/4"W)
 - 3/4 snack (4 5/16"W)
 - Candy (2 7/8"W)
- 360 - degree helix adjustable in 20 - degree increments provides flexibility to vend virtually anything



Custom Graphics (Optional)

Make your brand, product and marketing initiatives stand out with billboard graphics applied to your equipment.



iVend® Ensured Delivery Sensing Technology

Infrared sensor system virtually eliminates misvends and ensures that your customers receive their products or their money back.



Motor Pairing

Enables pairing two motors together for dispensing wide products.



Gum & Mint Tray (Optional)

Gum & Mint Tray option dispenses blister pack gum, rolled mints and even popular energy shots. Available on Mercato 4000, 5000 and Evoke 5.



Versatile Steel Beverage Tray Options

Holds up to 60 canned or bottle beverages. 9 and 10 Select Trays Available.



High Capacity Can Tray (Optional)

Add up to 150 - 12 oz cans to your Evoke ST & VT vendors with this patented option.



High Security Kit (Outdoor Only)

Impact resistant Lexan window cover, provide superior resistance to the elements, vandals and thieves. *Some features vary by model please consult manufacturer.



USB Software Upgrades and DEX Downloads with Evoke and Geneva

Never miss a sale with Greenlite Cashless



Give your business the
Greenlite to grow.



By accepting cashless payment options, including credit, debit and mobile payments, you can increase sales by 30% or more while increasing operational efficiencies.

Features:



Engineered for
Mobile Payments



Integrated Cash
Management



Timely Deposits,
Clear Pricing,
Faster Profits



Real-Time
Reporting



Advanced
Security



Remote
Inventory
Management



Remote
monitoring and
pricing

Payment Systems – Conlux Coin Changes and Bill Validators



**Other cash & credit payment systems including international are available.
Please contact U-Select-It for quote.**

Coin Changers



Model

MCM5-1

MCM5-4

Type

MDB

MDB

Currency/Capacity

5 Tube Cassette - 25¢, 5¢, 25¢, 10¢, 25¢

5 Tube Cassette - \$1, 5¢, 25¢, 10¢, 25¢

Bill Validators



Model

CV3Y2-U3MUS

CV322-USMUS

CV322-USMUS

Type

MDB

MDB

MDB

Currency/Capacity

U.S. 300 Bill Capacity - \$1-\$20 and Coupon - Bottler Front Bezel

U.S. 500 Bill Capacity - \$1-\$20 and Coupon - Full Line Front Bezel

U.S. 500 Bill Capacity - \$1-\$20 and Coupon - Bottler Front Bezel



Conlux CV 3000 Series

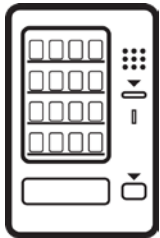


Conlux MCM5 Series

Financing

Competitive Financing Available

Innovative Finance Solutions Available For:



New Vending Equipment



Route Acquisition



Parts



Cashless Readers



Micro Markets

Leasing options also available

Since 1952, we have helped customers grow their vending businesses and reach their goals by providing flexible, competitive financing solutions.

Warranty and Service

Exceptional Quality Backed by Added Assurance

Premium 2-Year Warranty

Nothing drives us to do better than our commitment to your peace of mind. That's why every new USI merchandiser comes with a **premium 2-year warranty***. True value is owning a quality merchandiser without repair worries.



The Solid Shield Warranty provides up to an additional 36 months of warranty protection. Available with 12, 24 and 36 month coverage options, the Solid Shield Warranty provides peace of mind and coverage for future, unplanned expenses.

**Terms and conditions apply. Contact U-Select-It for full warranty coverage details.*